

P1 Transition from Kindergarten to Primary School

Mdm Gwendolyn Bava,
Senior Special Educational Needs Officer

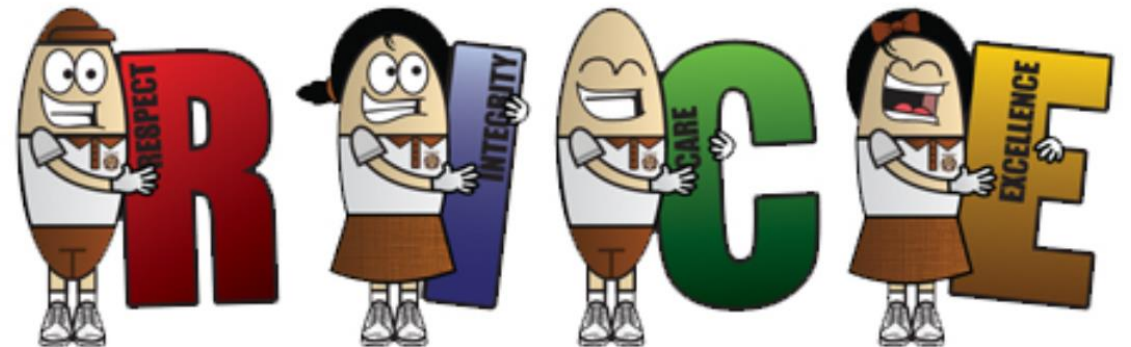
Smoothing the transition to Primary 1

When your child enters primary school, their experiences will include:



What is it like in Primary School?

- Laying a strong foundation
- Nurturing well-rounded individuals and passionate lifelong learners
- Providing learning opportunities that recognise their strengths and develop their full potential
- Preparing our children for the future
- Providing a safe learning environment to support our children's well-being



Key Changes

Kindergarten

- Shorter school hours
- Smaller class size & compound
- More hand-holding from the teachers
- Exploration and learning through play in learning areas
- No/Little Homework
- Meals/Food provided

Primary School

- Longer school hours
- Bigger class size & compound
- Learning to be independent
- Greater scope and rigour in curricular subjects
- Homework & assignments given
- Recess – Need to choose, queue and buy own food

How can you support your child?

Support

your child & encourage them to overcome challenges with your care

Affirm

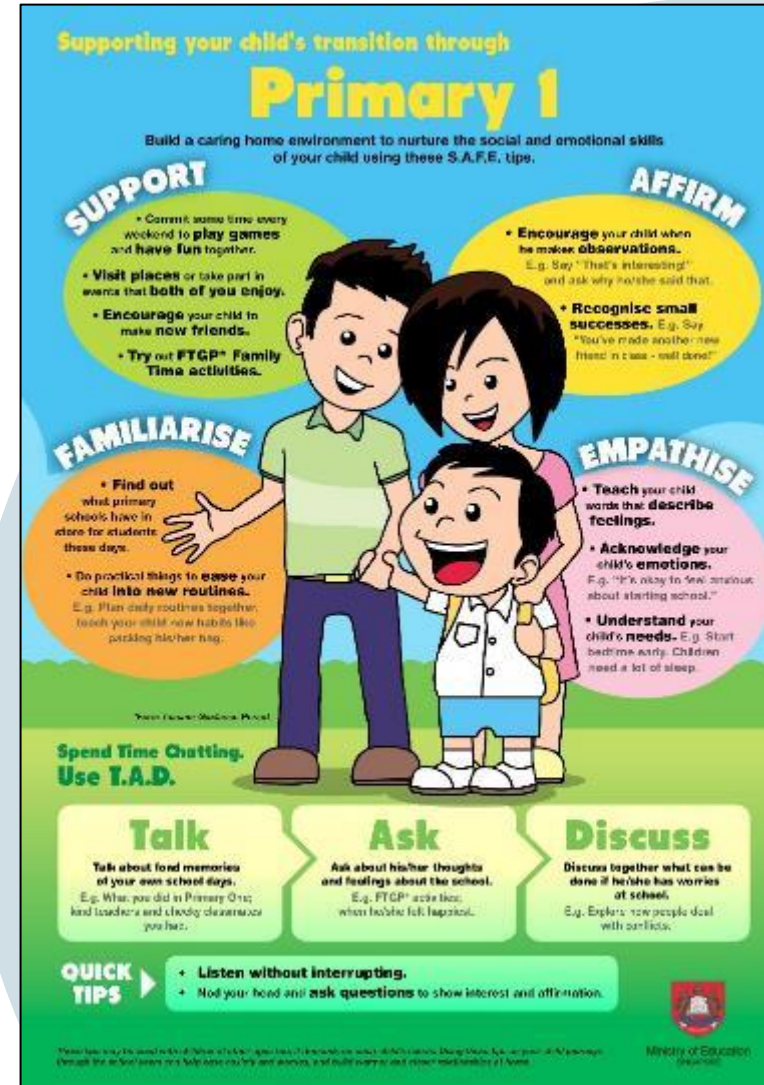
your child by recognising small successes & praising their efforts

Familiarise

your child with new routines gradually & share your experiences in primary school

Empathise

with & acknowledge your child's feelings



<https://go.gov.sg/preparingyourchildrenforp1>

Special Educational Needs

- A child entering Primary 1 may have **Special Educational Needs** if he/she finds it difficult to:
 - Write their name
 - Follow a simple story when it is read aloud to them
 - Communicate with others
 - Make friends
 - Stay focused to complete a task
 - Access learning in school due to hearing, visual or physical impairments
- Work with your child's teachers if you suspect your child is facing one or more of these challenges.
- Early intervention aids your child's development during the most critical stage of development.



Inclusive Education

- All mainstream primary schools are resourced to support students with mild to moderate special educational needs (SEN).
- The types of support given to the students would be from
 - Teachers trained in Special Needs (TSN)
 - Special Educational Needs (SEN) Officers
 - Support programmes such as Learning Support Programme (LSP), Learning Support for Mathematics (LSM), School-based Dyslexia Remediation (SDR) Programme
 - Access Arrangements (Primary 4 onwards)
- To provide understanding of peers with SEN, school-based talks are conducted
- For students who may need further external intervention or service, the school works with the MOE Educational Psychologist to provide consultation & referrals.



Extracted from: <https://www.moe.gov.sg/special-educational-needs/understand>

Inclusive Education



- All classes will have students with varying abilities and needs
- Diverse needs
 - Some students may be active & exuberant, some sensitive to sounds & touches, some have difficulties controlling their emotions
- We will guide & support all students while partnering parents
- We need all parents to be understanding and supportive
 - Setting the right message for the children, who are learning and developing, will help to build a gracious & caring culture
- Learning is more meaningful when there is diversity in the classroom
 - Provides your child with the opportunity to learn about & embrace individual differences – instils the values of empathy and respect